



WOODBIDGE  
SCHOOL PREP



CANCER  
RESEARCH  
UK

# YOUNG EAST ANGLIAN ARTISTS

Let your fundraising journey start here!

We ask that each child's entry to the art competition has a minimum donation of **£2.50**. Every step taken at Cancer Research relies on every pound donated. Within this pack, you will find a variety of ideas and resources to use in your own fundraising campaign.



To keep up to date with the latest information regarding this year's competition, please look at our website.

If you have any questions, you may also email [yeaa@woodbridgeschool.org.uk](mailto:yeaa@woodbridgeschool.org.uk)

# What your pack includes

This pack is designed to help you on your fundraising journey. There are a few resources which you may use. If you have any further questions or need any further assistance, please email [yeaa@woodbridgeschool.org.uk](mailto:yeaa@woodbridgeschool.org.uk).

## How Fundraising Helps

Find information on how the vital money we raise through YEAA is used in the combat against cancer.

## Classic Fundraising

Discover classic fundraising ideas that you can use to raise money to fund the entries to YEAA. From '5 minute sketches' to 'painting marathons', there are lots of different options to raise both awareness and money.

## Parent Letter

An example parent letter regarding the Young East Anglian Artist competition. Please note a copy can be obtained by emailing [yeaa@woodbridgeschool.org.uk](mailto:yeaa@woodbridgeschool.org.uk)

## Bunting

Use these printable bunting templates to promote and decorate your event in aid of Cancer Research and in celebration of the YEAA competition.

## Promotion Poster

This printable promotional poster has been designed to advertise the competition and exhibition, encouraging parents, children and members of the community alike to celebrate our young artists and support this brilliant cause.



# How your money can help



**£100**

could pay for a cell staining kit which our scientists use to distinguish between different types of blood cells.



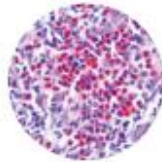
**£1,000**

could buy a pH meter used to maintain the ideal environment for sensitive experiments that could hold clues to finding new ways to beat cancer.



**£250**

could fund two research nurses for one day. Our research nurses are clinical experts who raise awareness of our trials and support and monitor patients during their treatment.



**£2,500**

could fund the PETReA trial for five days. This trial aims to help doctors decide how best to treat lymphoma.



**£500**

could fund a research assistant for one week. Research assistants carry out vital experiments in the lab, helping us to find the next breakthrough in cancer research.



**£5,000**

could fund the Add-Aspirin trial for five days. This clinical trial is investigating whether aspirin could stop cancer coming back after treatment.

For every £1 that is donated to Cancer Research UK, at least 80p goes directly to helping beat cancer. The remaining money goes towards raising vital funds for the future.

The money raised by Young East Anglian Artists can go a long way to helping those around us. As Woodbridge School Prep invites local primary schools to come together, we extend our gratitude to everyone who has been a part of this incredible journey so far.

Together, we can inspire the next generation of artists and make a meaningful contribution to the fight against cancer.

# Classic Fundraisers

## 5 Minute Sketches

---

The following fundraisers are quick and easy in order make fundraising as simple as possible.

### **Ask parents directly**

Many parents are very supportive of the fundraising and may be willing to give a £2.50 donation. Please find an example letter within this pack.

### **Organise a dress down day**

Organise a dress down day at school. Children could all dress to represent their favourite artist or painter.

### **Guess the artist**

Ask teachers from around the school to draw something they love. Children can bring in a donation to guess who the artists were. This is brilliant for showing that everyone can be an artist. Just don't forget a little prize for the winners!

Make sure you ask for help.

PTA, other teachers and students often have great ideas for fundraisers. Why not ask your school council?

## Painting Marathon

---

Should you have more time to organize your fundraiser, you may want to try one of the following.

### **Bake Sale**

Hold a bake sale out school to help raise money. Staff and students alike will love this idea.

### **Book/Toy Sale**

I am sure many of the children may have old toys or books that they no longer want. Why not hold a sale to raise money, with families donating unwanted items.

### **Quiz Night**

Why not ask your PTA or teachers to organize a quiz night. Theme your quiz towards art or keep it general.





# Parent Letter

## Woodbridge School's Young East Anglian Artists 2025

Dear Parents,

This year, we shall be taking part in Woodbridge School Prep's Young East Anglian Artist competition, celebrating artwork across East Anglia whilst simultaneously raising money for Cancer Research. The theme of this year's competition will be 'Opportunity'.

Opportunity is the spark that turns dreams into reality. Opportunity can be a door waiting to be opened, a path yet to be taken, or a moment of change. This year's art competition invites children to explore the theme of opportunity—where do they see it, and how can it be captured through art?

Through this competition, art not only inspires and uplifts but also creates real opportunities. By supporting Cancer Research UK, we are helping to fund life-saving research, innovative treatments, and greater awareness.

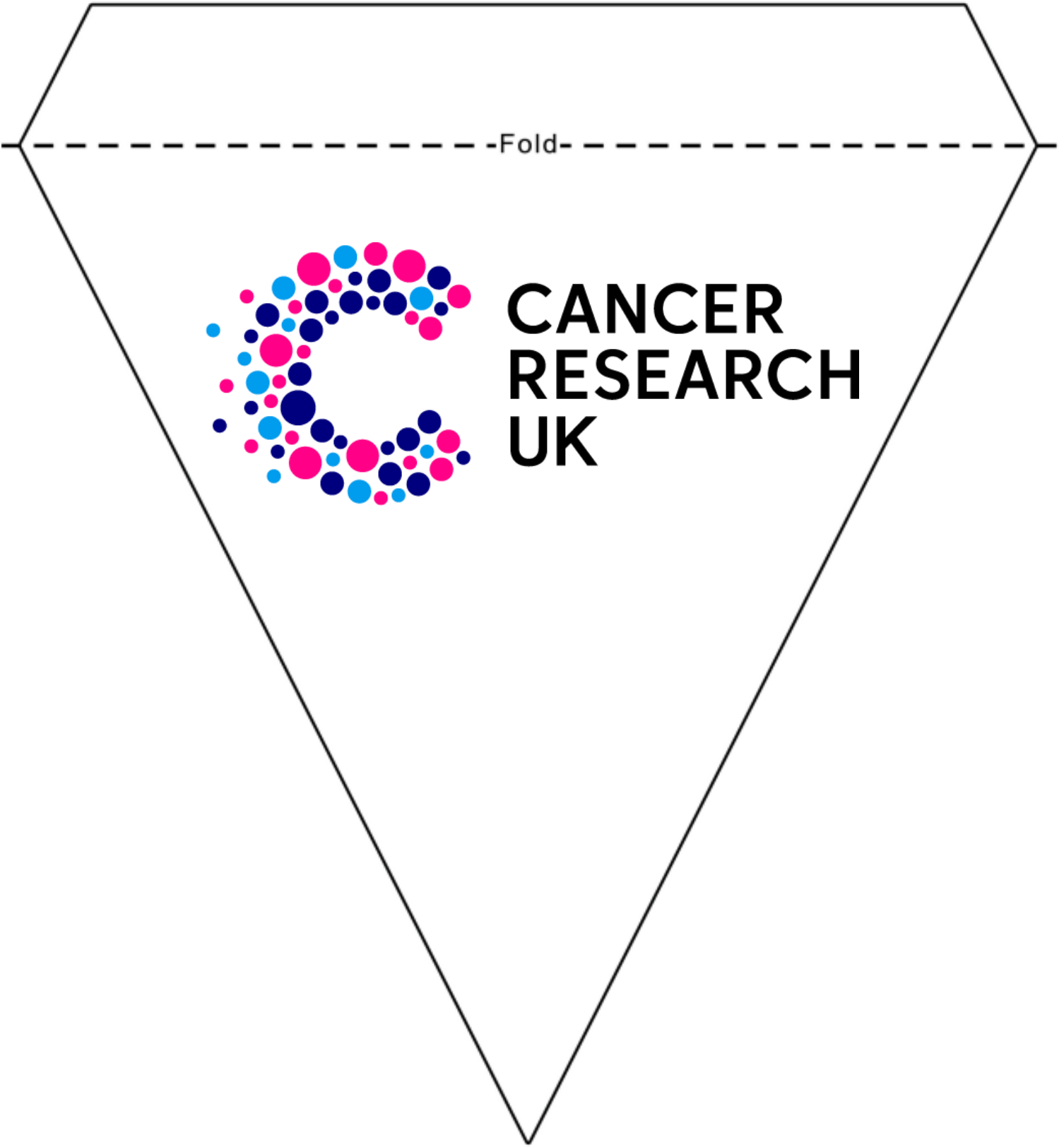
Local artists will select this year's prize-winners, and you will be notified if your child has won a prize, or if their picture has been selected for the exhibition. The exhibition will be held at the **John Gibbins Gallery in Woodbridge from Friday 13<sup>th</sup> until Sunday 15<sup>th</sup> June.**

Each exhibited artist will receive a certificate, and winning artwork will be framed. Paintings at the exhibit are also available for purchase, with priority being given to the artist's family. Following on from their success last year, postcards of the exhibited artwork will also be on sale. Purchased artwork can be collected from the exhibition on **Sunday 15<sup>th</sup> June after 4pm.** All other artwork will be returned to school and distributed to children. We know that we have many aspirational young artists within the school and are looking forward to sharing the work that they produce whilst raising money for charity.

Kind regards,

Please feel free to use our parent letter template. A copy has been sent with the fundraising pack and can also be obtained by emailing [yeaa@woodbridgeschool.org.uk](mailto:yeaa@woodbridgeschool.org.uk).

Print the following pages for bunting for your event.





WOODBIDGE  
SCHOOL PREP

Fold

# YOUNG EAST ANGLIAN ARTISTS



WOODBIDGE  
SCHOOL PREP



CANCER  
RESEARCH  
UK

# YOUNG EAST ANGLIAN ARTISTS

Involving schools from across Suffolk, Woodbridge School's yearly Young East Anglian artist competition celebrates the artwork of our region's young artists.

Last year, raising £2536 for Cancer Research, the competition is supported and judged by local artists. Chosen artwork is displayed in a public exhibition at the [John Gibbins Gallery on Woodridge Quay from Friday 13<sup>th</sup> – Sunday 15<sup>th</sup> June.](#)

This year our theme will be *Opportunity*.

Keep up to date on our school website and donate via our Cancer Research Fundraising page.

